

System Psa Medical Oxygen Generator For Hospital Intensive Care Units 99% Purity

Our Product Introduction

for more products please visit us on n2-nitrogengenerator.com

Basic Information

- Place of Origin: SUZHOU, CHINA
- Brand Name: SUMAIRUI GAS
- Certification: ISO9001, CE, BV, SGS, TUV, ASME, GOST,NB,NR ETC
- Model Number: OSO-M
- Minimum Order Quantity: 1 set
- Price: Negotiable
- Packaging Details: Exporting wooden case /Film packing
- Delivery Time: 4-5 weeks
- Payment Terms: L/C, T/T, Western Union, MoneyGram
- Supply Ability: 100 sets/months

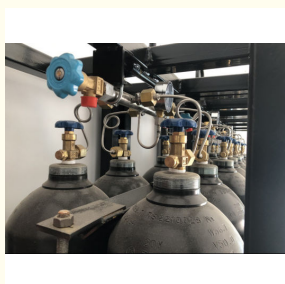


Product Specification

- Material: Stainless Steel
- Purity: 93%-99.5%
- Flow: 500-1000 SCFM
- Pressure: 5-200 Bar
- Control Type: PLC Controls
- Oxygen Analyzer: Included
- HMI: Included
- Flow Meter: Included
- Manometer: Included
- Towers: Twin
- Color: White
- Container Mode: Customized
- Plug And Play: Option
- Type: Breathing Apparatus, Medical Gas Equipments, Respiratory Equipments



More Images



Product Description

Leading 99% purity PSA oxygen generator for Intensive care units stable oxygen supply for middle east & Africa market

Product Detail

Our Oxygen plant equipment put the air as raw material, zeolite molecular sieve as adsorbent, under the normal temperature low pressure, using the selectivity of zeolite molecular sieve for oxygen adsorption. The purity is 93%±3%. In addition to the existing oxygen generators, we can also customize the oxygen generator system according to the installation conditions of the customer site and can be installed on-site for customers.

Working Principle

After being dried and purified, the medical air enters the adsorption tower through a switching valve. In the adsorption tower, oxygen gas gathers at the top of the adsorption tower and then enters the oxygen storage tank. Dust, bacteria, and peculiar smell are removed by different filters to achieve high quality oxygen. Our oxygen plant allows the hospital to have stand-alone oxygen production capability directly on the facility site.

Specifications

Oxygen Generators Capacity: 3Nm³/h~100Nm³/h(single unit)

Medical Oxygen Purity: 93%±3% (with PSA technology)

Power supply: 110-575V/50-60Hz

Very simple and easy to installed

Latest components to ensure smooth performance

Oxygen for medical use is the best alternative to liquid supply for filled cylinders

Out Pressure: 3~0.55 Mpa (adjustable)

Operation Noise: ≤85dB(A)

Higher separation efficiency Sumairui Gas oxygen generators have higher separation efficiency than other PSA oxygen generators of the same type, requiring only a relatively small amount of air to obtain more oxygen

Easy to Install and Maintain All parts of the oxygen generator will be commissioned before leaving the factory and sent to the installation site together, making installation very easy. If necessary, we will arrange professional installation personnel to install and guide on site.

Automatic and stable operation 24/7 – 365 days fully automatic operation. Reliable, tested and controlled components ensure smooth performance. Control and checking via monitoring control system automatically, real-time display and monitoring pressure, purity, flow rate, operating condition of each unit and with alarm function.

Features

- Oxygen at any time and at any place
- Cost-effective through low operating costs
- Sophisticated and reliable technology
- Exact purity for every application
- No rental commitments as with bottles/bundles and tank systems
- No CO₂ pollution for the environment
- No hazardous goods
- No risk of explosion
- In-house placement and production

NO	Model	Capacity (L/min)	Purity	Outlet pressure (Mpa)	Outlet (mm)	Dimensions (L*W*H mm)	Weight (KG)
1	OSO-M50	50	93±3%	0.2-0.4 Mpa	DN10	1250*1000*1900	300
2	OSO-M100	100			DN10	1400*1250*1950	400
3	OSO-M200	200			DN15	1800*1600*2300	600
4	OSO-M400	400			DN25	2100*2000*2400	800
5	OSO-M500	500			DN25	2200*2100*2450	1000
6	OSO-M600	600			DN25	2300*2200*2600	1200
7	OSO-M800	800			DN25	2450*2200*2650	1400
8	OSO-M1000	1000			DN45	2500*2250*2750	1800

Design reference:

- Compressed air inlet pressure 7.5 bar(g)/108 psi(g)
- Air quality 1.4.1 according to ISO 8573-1:2010
- Oxygen outlet pressure 2-4 bar(g)/58psi(g)
- Oxygen quality 1.2.1 according to ISO 8573-1:2010
- Twin towers with instruments
- Designed working temperature max 50 °C
- Dew point at Oxygen outlet - 50 °C

Notes:

Following request of oxygen generator will be customized :

- ※ Oxygen outlet pressure >4 bar(g)/58 psi(g)
- ※ Filling cylinders 150 bar(g)/200 bar(g)/300 bar(g)
- ※ Dew point < - 50 °C
- ※ Movable/containerized , plug and play
- ※ Other special requirements as per site conditions



Suzhou Sumairui Gas System Co.,Ltd.



+8613812659092



dylan@sumairui.com



n2-nitrogengenerator.com

No 161,ZhongfengJie, Suzhou High technology district, Suzhou